

Community Advisory Committee

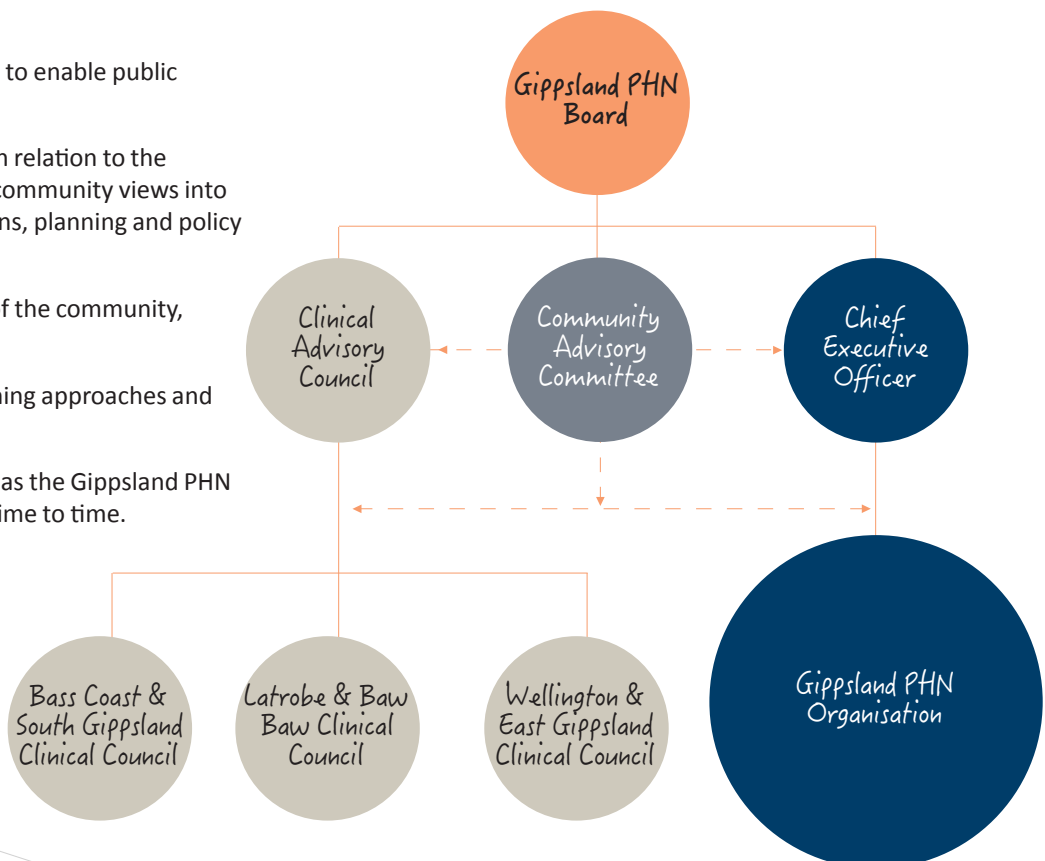
A key feature of Gippsland PHN will be Clinical Councils and a Community Advisory Committee, ensuring health professionals and community are major contributors to the new organisation. It is integral to Gippsland PHN that general practice, other health professionals as well as the consumer voice and experience of care is centrally involved in planning and advisory decision making about health solutions.

A key component of Gippsland PHN governance is the establishment of a Community Advisory Committee that will provide the community perspective to Gippsland PHN to ensure that decisions, investments, and innovations are patient centred, cost-effective, and locally-relevant and aligned to local care experiences and expectations.

The Community Advisory Committee will report directly to Gippsland PHN, and comprise 10 – 12 community members across the region who represent the perspectives of, and can influence; consumers, carers and/or patient experience of the primary health system in Gippsland.

The Community Advisory Committee is tasked with informing and guiding the development of Gippsland PHN strategy through recommendations to the Gippsland PHN Board by:

- Providing input on sustainable opportunities to improve and integrate health care services for the patient or consumer.
- Engaging with community networks to enable public participation.
- Providing direction and leadership in relation to the integration of consumer, carer and community views into all levels of Gippsland PHN operations, planning and policy development.
- Advocating to the Board on behalf of the community, consumers and carers.
- Advising on population health planning approaches and priorities for investment.
- Providing such other advisory input as the Gippsland PHN Board may request in writing from time to time.



Community Advisory Committee

Membership of the Community Advisory Committee may ideally comprise, but is not limited to;

- Community members who are consumers, carers and/or patient representatives of the primary health system in Gippsland
- Consumers, carers and/or patients who represent another network, committee and/or group focused on health care.
- Allocated Gippsland PHN Board member (non-voting member)
- Gippsland PHN Executive sponsor (non-voting member)
- Gippsland PHN practice support staff (non-voting member)

Guiding principles for the function of the Community Advisory Committee will be consistent with Gippsland PHN:

- A long term, whole system perspective
- Equal access to services
- Collaborative local leadership
- Consumer self-determination and empowerment
- Performance, efficiency and value
- Leading innovation and evidence-based practice.

The Community Advisory Committee will meet quarterly for up to three hours (either by teleconference or face-to-face), and additionally as deemed necessary. Notice of meeting and supporting papers will ordinarily be distributed five working days in advance. Meeting time, location and date will be determined by consensus prior to each meeting.

Community Advisory Committee members will be appointed for a term of one year at the start of each financial year.

Community Advisory Committee members (with exception of Gippsland PHN Board members) will be paid for each meeting attended on a quarterly basis, in arrears, up to a limit of;

- Community Advisory Committee Member: \$2,000 per annum (Excl. GST or Incl. Superannuation and Workcover)

Payment will be triggered by the attendance record from meeting minutes.

The Community Advisory Committee will be supported by a Gippsland PHN Executive Sponsor as part of the regular membership. The Executive Sponsor ensures operational alignment with the work of The Community Advisory Committee, and will ensure a flow of information from Gippsland PHN such as data, health planning analysis, practice support and care pathways.

