

# Clinical Councils

*A key feature of Gippsland PHN will be Clinical Councils and a Community Advisory Committee, ensuring local services and general practice are major contributors to the new organisation. It is integral to Gippsland PHN that general practice as well as the consumer voice and experience of care is centrally involved in planning and advisory decision making about health solutions.*

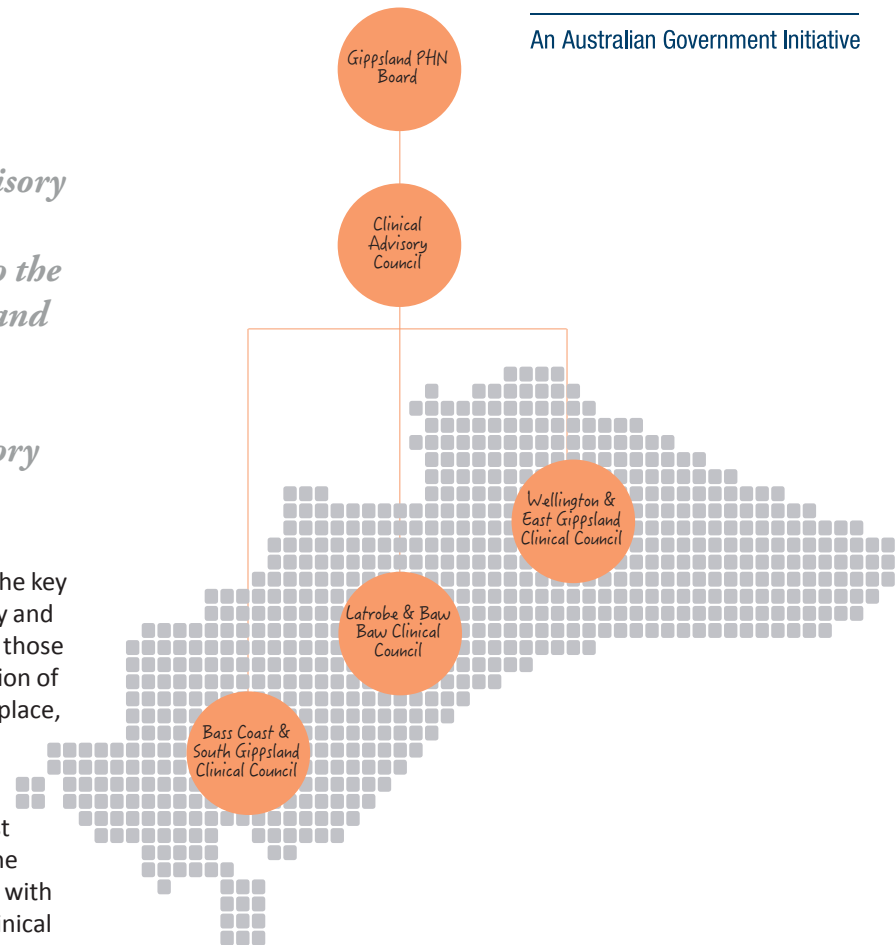
On 1 July 2015, Gippsland PHN commenced operations. The key objectives of Gippsland PHN are to; increase the efficiency and effectiveness of medical services for patients, particularly those at risk of poor health outcomes and to improve coordination of care to ensure patients receive the right care, in the right place, at the right time.

Gippsland PHN will establish three sub-regional Clinical Councils (Bass Coast & South Gippsland; Wellington & East Gippsland; and Latrobe & Baw Baw), all which report to the overarching Gippsland Clinical Advisory Council. Together with three Gippsland PHN Board Directors, the sub-regional Clinical Council Chairs will form membership on the Clinical Advisory Council to ensure locally relevant clinical matters influence Gippsland PHN decision making.

Sub-regional Clinical Councils will be GP-led and comprise clinical skill representative of the local community, including but not limited to, nurses, allied and community health, Indigenous health workers, mental health, aged care, specialists and hospital representatives.

The role of the sub-regional Clinical Councils is to report on clinical issues that will influence Gippsland PHN Board decisions on the unique needs of the three subregions of Gippsland.

Sub-regional Clinical Councils will support Gippsland PHN to develop local strategies to improve the operation of the health care system for patients in Gippsland. Sub-regional Clinical Councils will work with local hospital networks to support Gippsland PHN in facilitating effective primary health care provision to reduce avoidable hospital admissions and presentations.



The Clinical Advisory Council is tasked with informing the development of Gippsland PHN strategy through recommendations to the Clinical Advisory Council by:

- Reporting on opportunities to improve medical and health care services through strategic, cost-effective innovation and investment.
- Ensuring a local population health planning focus in the context of the broader Gippsland region.
- Providing clinical leadership and advocacy for local initiatives which support local and national health priorities.
- Reviewing, designing and/or inputting into locally relevant clinical care pathways designed to improve quality, streamline services and utilise existing health resources effectively.
- Seeking to integrate effort and efficiency of practice to improve medical and healthcare services.
- Reviewing, identifying and defining risk relevant to clinical service delivery.
- Providing such other advisory input as the Gippsland PHN Board or Clinical Advisory Council may request in writing from time to time.